



## HEALTH & SAFETY ADVISORY

PREVENTION MEASURES TO MAKE SURE OUR GUESTS & STAFF ARE SAFE.

De Hoop Collection has implemented the following protocols to ensure a healthy and safe environment.

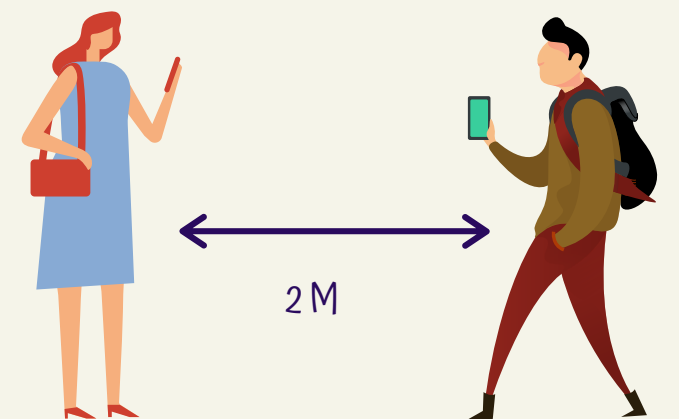
### TEMPERATURE SCREENING & HEALTH CHECKS

Temperature Screening on guests will take place at the Cape Nature gate on arrival and a health questionnaire will be required on check-in. Daily health checks will be undertaken on all staff.



### KEEPING SOCIAL DISTANCING

We encourage guests to keep appropriate social distancing from other guests and our staff are trained on social distancing measures.



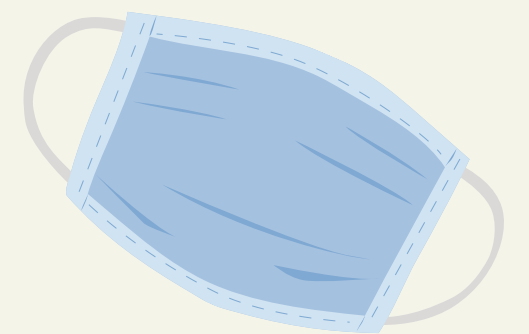
### HAND SANITIZER

Hand sanitizer will be handed out on check-in and will be available in all public spaces.



### MASKS

Face masks are required in all communal and public spaces.



### EXPERIENCES

All adventures & activities will implement safe and appropriately distanced interactions with relevant guides and staff.



### GUIDED ACTIVITIES

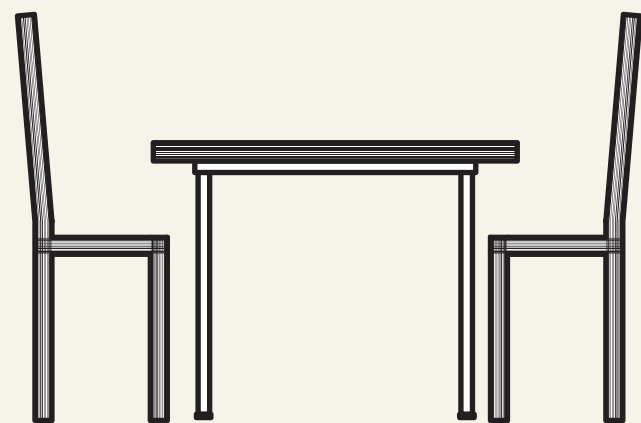
We limit the maximum number of people on games drive to 6 per vehicle (unless quests are part of a large family group travelling together)



### RESTAURANTS & DINING

Dining set-up for all meals has been carefully considered.

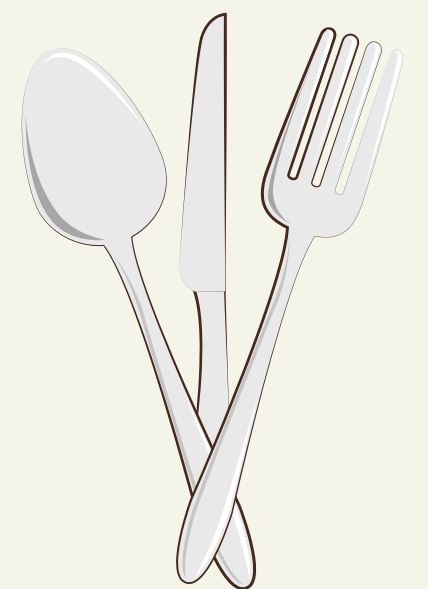
Tables in dining areas are spaced at least 2 meters apart.



### FOOD OPTIONS

All meals will be individually plated and served.

No open-food buffets will be served.



### MEDICAL EMERGENCY

De Hoop emergency number 071 260 7805

Please contact us should you have any questions or concerns

[info@dehoopcollection.co.za](mailto:info@dehoopcollection.co.za)

+27 21 422 4522

[www.dehoopcollection.com](http://www.dehoopcollection.com)